

# **HYPERTENSION RESEARCH IN PREGNANCY**

**Abstracts for The 46<sup>th</sup> International Congress  
on Pathophysiology of Pregnancy**

**and**

**The 35<sup>th</sup> Meeting of Japan Spcoety  
for the Study of Hypertention in Pregnancy**

Date: September 18–20, 2014

Venue: Keio Plaza Hotel, Tokyo, Japan

# Organization

## 46th International Congress on Pathophysiology of Pregnancy (ICPP: OG Meeting) Local Organizing Committee

### Organizing Committee

Advisors	Katsuto EGUCHI	Atsuo HIDAKA
President	Masao NAKABATYASHI	
Vice President	Satoru TAKEDA	Takashi OKAI
Secretary General	Hiroyuki SEKI	
Asst. Secretary General	Tomoko ADACHI	
Committee	Tomoaki IKEDA	Atsuo ITAKURA
	Hidetaka KATABUCHI	Naohiro KANAYAMA
	Tadashi KIMURA	Yoshiki KUDO
	Takahiko KUBO	Takao KOBAYASHI
	Shigeru SAITO	Haruhiko SAGO
	Hiroshi SAMESHIMA	Koichiro SHIMOYA
	Mayumi SUGIURA	Yoshikatsu SUZUKI
	Akihiko SEKIZAWA	Kenjiro TAKAGI
	Toshiyuki TAKESHITA	Mamoru TANAKA
	Katsuhiko NARUSE	Fumiki HIRAHARA
	Yuji HIRAMATSU	Tomoyuki FUJII
	Keiya FUJIMORI	Ken-ichi FURUYA
	Shintaro MAKINO	Hideaki MASUZAKI
	Hisanori MINAKAMI	Mineo YAMASAKI
	Tatsuo YAMAMOTO	Kazushi WATANABE
	Committee Chair	Committee Member
Scientific Program Committee	Shigeru SAITO	Yuji HIRAMATSU, Akihiko SEKIZAWA, Tomoyuki FUJII, Naohiro KANAYAMA, Keiya FUJIMORI
Fund-Raising Committee	Tomoyuki FUJII	Tomoaki IKEDA, Mayumi SUGIURA, Fumiki HIRAHARA
Social Program Committee	Toshiyuki TAKESHITA	Atsuo ITAKURA, Takao KOBAYASHI, Ken-ichi FURUYA
International Public Relations Committee	Tadashi KIMURA	Yoshiki KUDO, Hiroshi SAMESHIMA, Haruhiko SAGO
Domestic Public Relations Committee	Naohiro KANAYAMA	Hisanori MINAKAMI, Hidetaka KATABUCHI, Koichiro SHIMOYA, Takahiko KUBO
Registration Promotion Committee	Takahiko KUBO	Kenjiro TAKAGI, Hideaki MASUZAKI, Atsuo ITAKURA
Treasury Committee	Mineo YAMASAKI	Tatsuo YAMAMOTO, Mamoru TANAKA
Committee Secretaries	Yoshikatsu SUZUKI	Kazushi WATANABE, Shintaro MAKINO, Katsuhiko NARUSE, Ako YAMAZAKI

# Venue

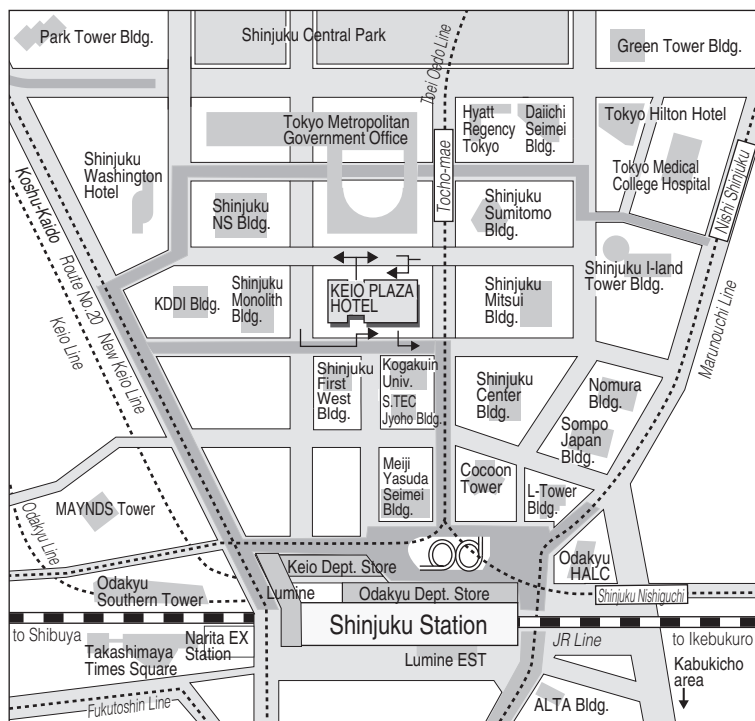


## KEIO PLAZA HOTEL TOKYO

Tel: + 81 3 3344 0111

Fax: + 81 3 3345 8269

2-2-1 Nishi-Shinjuku, Shinjuku-Ku, Tokyo 160-8330 Japan



### From Shinjuku Station

- 5 minutes walk from the west exit

### From/To Narita International Airport

- By Airport Limousine Bus  
Duration: Fare: approx. 120 minutes.  
Adult JPY 3,100 Child JPY 1,550
- By NEX (Narita Express) train  
Duration: Fare: approx. 81 minutes.  
Adult JPY 3,190 Child JPY 1,590

### From/To Haneda Airport

- By Airport Limousine Bus  
Duration: Fare: approx. 70 minutes.  
Adult JPY 1,230 Child JPY 620

### Good Neighbor Shuttle Bus

As one of the “Tokyo Disney Resort Good Neighbor Hotels”, we have complimentary shuttle bus service directly from our hotel to Tokyo Disneyland and Tokyo DisneySea Park. Advanced reservations are required. Travel time from the hotel to the Tokyo Disney Resort is approximately 70 minutes.

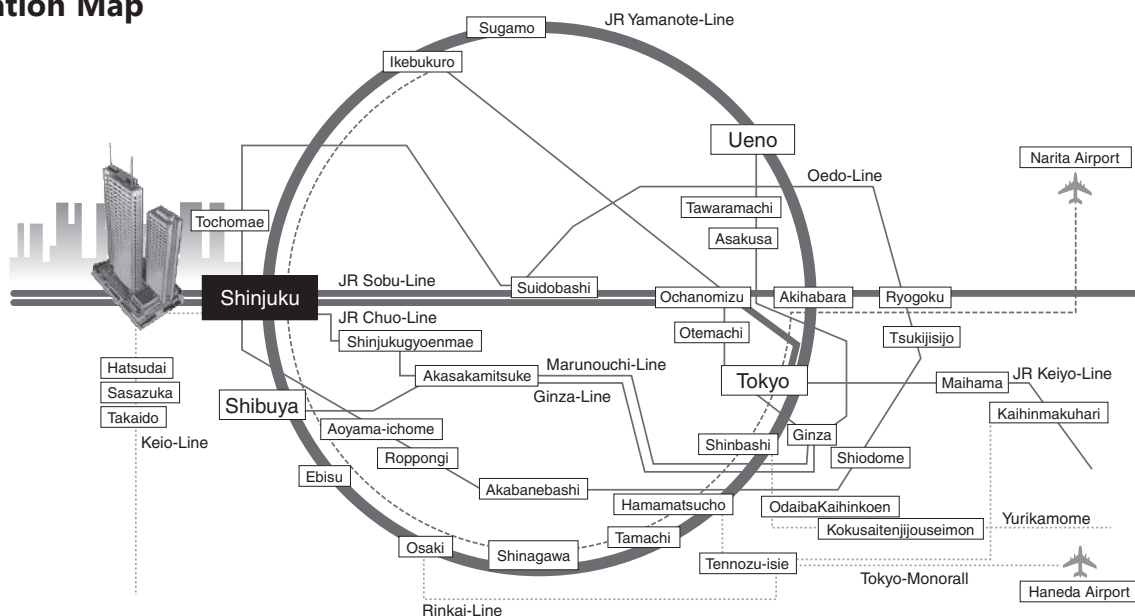
#### [Notice]

- Since the capacity is limited, please make a reservation by phone in advance.
- This service is only available for staying guests.
- The departure time may change depending on the day.
- The travel time may vary due to traffic conditions.
- Bus service may be cancelled due to weather conditions and other unforeseen circumstances.

### Shinjuku Express Bus Terminal

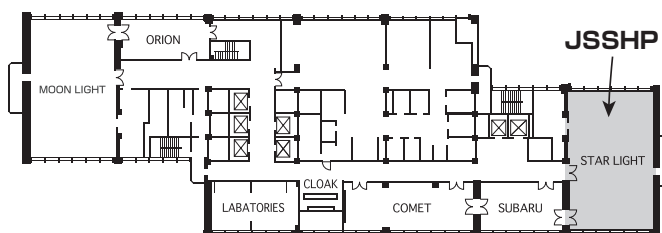
One of the biggest bus stations in Shinjuku is located near our hotel. You can access to various popular tourist destinations from this station. e.g.: To Mt. Fuji Fifth Station (Travel time: about 2 hours and 30 minutes)  
Caution: Does not operate during the winter season.

## Location Map

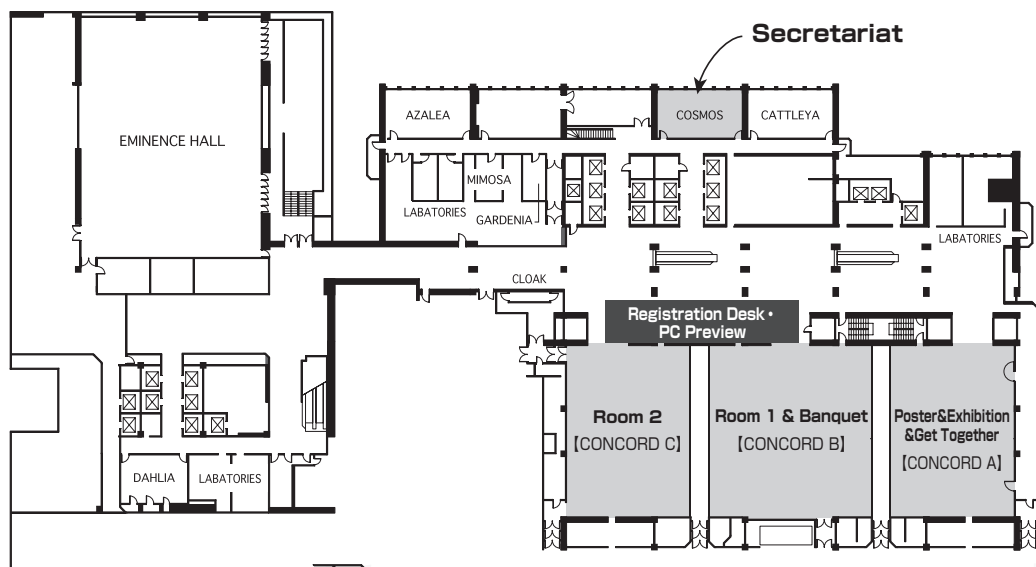


# Floor Map of the Venue

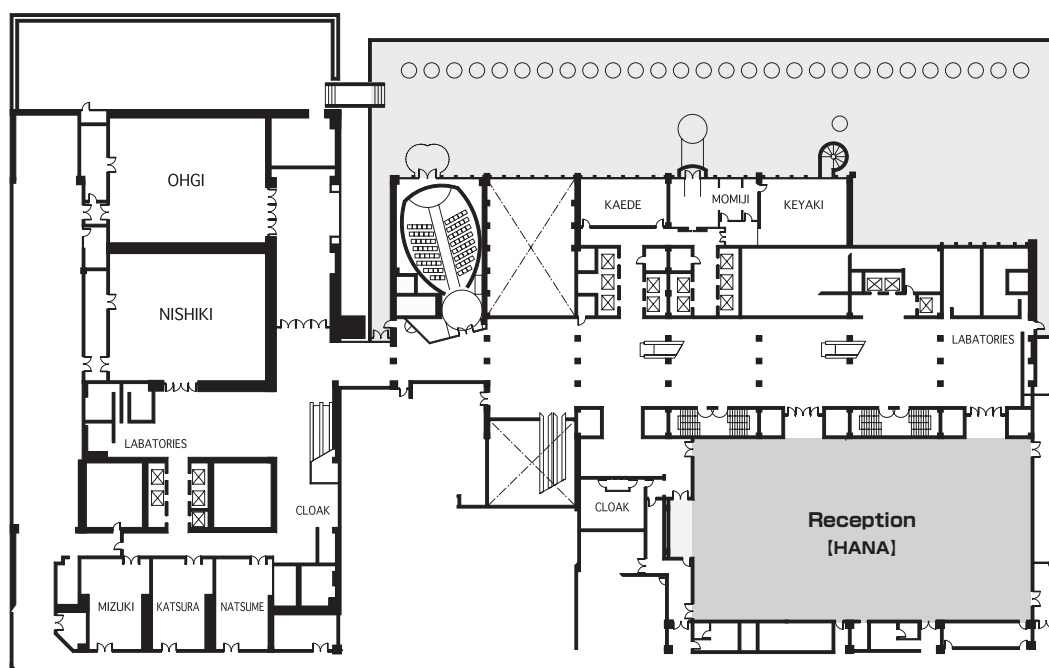
43F



5F



4F



# Meeting Information

## Dates and Venue

Dates : September 18 (Thu.) to 20 (Sat.), 2014

Venue : Keio Plaza Hotel

2-2-1 Nishishinjuku, Shinjuku-ku, Tokyo 160-8330, Japan

Tel : +81-3-3344-0111

<http://www.keioplaza.com/>

## Registration Fee

Code	Registration fee including	Until July 31	Until August 29	On-Site
Physician (46ICPP + 35JSSHP)	Admission to all scientific program One set of 46 <sup>th</sup> ICPP materials, Certificate of attendance Congress Lunches, coffee/tea breaks	JPY 30,000	JPY 35,000	JPY 40,000
Allied Health (e.g. Nurses)		JPY 10,000		JPY 12,000
Trainee, Student		Waived (Please show your student ID card at registration desk.)		
Others		JPY 30,000		
Accompanying Person*		JPY 5,000		
Participants attending only September 20, 35JSSHP		Not applicable		JPY 8,000
Banquet (September 18) *A Prior application is necessary.		JPY 10,000		Not applicable
Get Together (September 19)		Free		

\*Accompanying Person should be family and relatives.

For On-Site registration, please note that we accept credit card and Japanese cash.

Registration desk is open as follows :

- September 17 (Wed.) 17:00 ~ 19:00
- September 18 (Thu.) 7:00 ~ 18:00
- September 19 (Fri.) 7:00 ~ 18:00
- September 20 (Sat.) 7:00 ~ 13:00

You can join luncheon seminars and/or morning seminars, which will provide you lunch/ breakfast.

Please note that the lunch/ breakfast will be provided on a first come first served basis.

## **Banquet**

- Venue : Room 1, Concord B, 5F, Keio Plaza Hotel
- Date and Time : September 18 (Thu.) 18:30 ~ 19:00 Cocktail time  
19:00 ~ 21:00 Banquet
- Dress code : Informal (Formal dinner will be served.)

Please note that a prior application is necessary.

## **Get Together/ Poster Award Ceremony**

- Venue : Exhibition Hall, Concord A, 5F, Keio Plaza Hotel
- Date and Time : 18:30 ~ 20:30, September 19 (Fri.)
- Dress code : informal (A buffet style dinner will be served.)

## **Information for Participants**

- 1) Participants are responsible for making their own travel arrangement. If there are any questions regarding travel arrangements, please contact our official travel agency, JTB.
- 2) If there are any questions regarding the congress and its scientific program, please contact the Congress secretariat.
- 3) Visa may be necessary for citizens of certain countries to enter Japan. Please refer to your local embassy or travel agency.

## **Correspondence**

Secretariat of the 46<sup>th</sup> International Congress on Pathophysiology of Pregnancy  
c/o MA Convention Consulting  
Kojimachi Parkside Building 402, 4-7 Kojimachi, Chiyoda-ku, Tokyo 102-0083, Japan  
TEL: 81-(0)3-5275-1191 / FAX: 81-(0)3-5275-1192  
E-mail : 46og35jsshp@maccc.jp

Official Travel Agency  
JTB Global Marketing & Travel Inc.,  
Sales Representative Convention Section MICE Sales Dept.  
46<sup>th</sup> International Congress on Pathophysiology of Pregnancy Desk  
FAX : +81-3-5495-0685 Email : 46og35jsshp@gmt.jtb.jp

## **Information for Presenters of Workshop and Other Oral presentations**

- 1) The official language is English.
- 2) All speakers are requested to bring their presentation data on USB Flash Drive, CD-R or their own computer to PC Preview (See details below) and to upload their presentation data at least 30-min before their session.
- 3) The Scientific Program Committee will allot each speaker of Workshop Session 15-min oral presentation followed by 4-min discussion, guided by moderators. Speakers are requested to strictly keep the allotted time.

## **Notes :**

- 1) Accepted application format is Windows PowerPoint 2003/2007/2010/2013.
- 2) Recommended typefaces are Century, Century Gothic, Arial, and Times New Roman. Please avoid special

characters.

- 3) Please include the presentation number and presenter's name in the file name.
- 4) If you create your presentation using a Macintosh and/or moving images, please bring your own computer.
- 5) If you use your own computer, please bring your power adaptor.
- 6) Presenter Tool displaying your manuscript on PC monitor at the podium is not available.
- 7) PC Preview Desk (5F lobby, Keio Plaza Hotel) is open as follows :
  - September 18 (Thu.) 7:30 ~ 18:00
  - September 19 (Fri.) 7:00 ~ 18:00

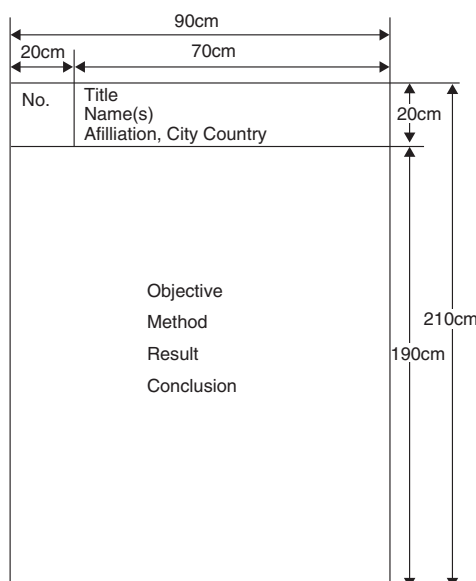
### **Information for Poster Presenters**

- 1) Poster Discussion Session will be held on September 18 (Thu.) and September 19 (Fri.).
- 2) The official language is English.
- 3) The Awards will be given to a selected number of outstanding posters.
- 4) The participants for the Poster Discussion will stand in front of their posters during Poster Discussion Session. Presentation will not be necessary.
- 5) The Awards will be honored at the Get Together on September 19 (Fri.).
- 6) All posters should be set up as the following time.
  - September 18 (Thu.) between 13:00 ~ 16:30
  - September 19 (Fri.) between 12:50 ~ 16:10
- 7) Poster Discussion Session is as follows.
  - September 18 (Thu.) between 16:30 ~ 18:00
  - September 19 (Fri.) between 16:10 ~ 18:00
- 8) Please stay in front of your poster for at least 30 min during your session in order to encourage sufficient discussion and in order for the Program Committee Members to select the Award.
- 9) Posters can be removed as the following time.
  - September 18 (Thu.) 18:00 ~ 20:00
  - September 19 (Fri.) 18:00 ~ 18:30Posters remaining on the board after 20:00/ 18:30 will be bediscarded.
- 10) The Award will be presented at Get Together Ceremony which will be held at Exhibition Hall, Concord A, September 19 (Fri.), 18:30 ~ 20:00. Awardees, please make sure to be present at the Ceremony.

### **Poster Scheme of Discussion**

- 1) All posters are to be written entirely in English.
- 2) A presentation number to be placed at the top left of the poster will be provided by the Secretariat. Each author is requested to indicate the "title", "authors' names" and "authors' affiliations" at the top right of the panel within an area measuring 70 cm wide by 20 cm high.
- 3) The poster contents should be arranged to describe the "objective", "methods", "results" and "conclusion".
- 4) The usable area of the contents is the size measuring 90 cm wide by 210 cm high. The layout of the presentation contents is at the authors' discretion.
- 5) The typeface used on the poster panel should be at least 18 mm high so that the content can be read from a distance.
- 6) Tables and figures should likewise be of an appropriate scale, with text large enough to be read easily.

- 7) Posters are attached to the boards with thumbtacks, which will be provided by the Secretariat. No paste, glue, staples and/or nails are permitted.



### **Information for Chairpersons of Oral sessions**

All chairpersons of oral sessions are requested to be seated at the Next Chair's seats located in the left front row 30-min before their session starts.

### **Official Website of the Congress**

<http://og2014.ibmd.jp/en-index.html>

### **General Information about Japan**

#### **Passport & Visa**

To visit Japan, visitors must have a valid passport. A visa is required for citizens of countries that do not have visa exemption agreements with Japan. Please contact your nearest Japanese Embassy or Consulate for visa requirements.

#### **Duty Free Imports**

Personal effects and professional equipment can be brought into Japan duty free as long as the items and quantities are deemed reasonable by the customs officer. Visitors can also bring in 400 cigarettes, 500g of tobacco or 100 cigars; 3 bottles of alcoholic beverages; 2oz of perfume; and gifts and souvenirs with a total market price of less than 200,000 yen or equivalent.

There is no allowance for tobacco or alcoholic beverages for persons aged 19 years or younger.

Firearms and other types of weapons and narcotics are strictly prohibited.

#### **Insurance**

The organizer accepts no responsibility for accidents that might occur. Delegates are encouraged to purchase travel insurance before leaving their home countries. Insurance plans typically cover accidental loss of belongings, medical costs in case of injury or illness, and other risks of international travel.



**Climate**

The temperature in Tokyo during the period of the Congress ranges between 20°C and 25°C.

**Currency Exchange**

Only Japanese yen (¥) is acceptable at regular stores and restaurants. Certain foreign currencies may be accepted at a limited number of hotels, restaurants and souvenir shops. You can buy yen at foreign exchange banks on presentation of your passport.

**Traveler's Checks & Credit Cards**

Traveler's checks are accepted only by leading banks and major hotels in principal cities, and the use of traveler's checks in Japan is not as popular as in some other countries. VISA, MasterCard, Diners Club, and American Express are widely accepted at hotels, department stores, shops, restaurants and nightclubs.

**Tipping**

In Japan, tips are not necessary anywhere, even at hotels and restaurants.

**Electricity**

Electric current is uniformly 100 volts AC throughout Japan. However, electricity is provided at either 50 or 60 cycles, depending on location : 50 cycles in eastern Japan (including Tokyo); and 60 cycles in western Japan. Leading hotels in major cities often provide two types of electrical outlets (100 volts and 220 volts), but their sockets usually accept only two pronged plugs.

**Shopping**

Shops and other sales outlets in Japan are generally open on Saturdays, Sundays and national holidays as well as weekdays from 10:00 to 19:00. Department stores, however, are closed on one weekday, differing by store, and certain specialty shops may not open on Sundays and national holidays.

# Program at a Glance

## Wednesday, September 17

	4F, Room 'Hana'	4F, Foyer
17:00		Registration
18:00	Reception	

## Thursday, September 18

	Room 1, Concord B	Room 2, Concord C	Exhibition Room, Concord A	
			Poster	Exhibition
8:00			Breakfast Service	
8:30	Admission (Be seated)			
9:00	Opening Ceremony			
9:30	Opening Lecture  Preeclampsia and eclampsia -the evolution and current status  Speaker S. Arulkumaran (President, FIGO) Chairperson Ikuo Konishi (President, JSOG)	Sept. 18–20 Video lecture by Catherine Spong (National Insutitute of Health)		
10:00	Overseas Invited Lecture 1  ISSHP 2014 Classification and diagnosis of hypertensive pregnancies: Proteinuria in perspective  Speaker Mark Brown (President, ISSHP) Chairperson Shigeru Saito (President, JSSHP)			
10:30	Overseas Invited Lecture 2  Preeclampsia – a disease of an individual couple  Speaker Gus Dekker (Australia) Chairperson Satoru Takeda (Juntendo University)			
11:00	Coffee Break			
11:15	Sponsored Lecture 1 (Sponsored by Japan Vaccine Co., Ltd.)  Mechanism of perinatal brain injury  Speaker Henrik Hagberg (UK) Chairperson Takashi Okai (Aiiiku Hospital)	Sponsored Lecture 2 (Sponsored by Asahi Kasei Pharma Corporation)  The challenges to introducing internationally acceptable criteria for GDM  Speaker Jeremy J N Oats (Australia) Chairperson Yasue Omori (Honorary Professor, Tokyo Women's Medical University)		
11:50				
12:00	Educational Lecture 1 (Sponsored by Natera, Inc./ Fetal Life Science Center)  Second generation single nucleotide polymorphism based non-invasive prenatal testing  Speaker Zachary P. Demko (USA) Chairperson Kou Sueoka (Keio University)	Educational Lecutre 2 (Sponsored by Ferring Pharmaceuticals Co., Ltd.)  Cervical maturation and labor induction  Speaker Bruno Carbonne (France) Chairperson Naohiro Kanayama (Hamamatsu Medical University)		
12:50				

	Room 1, Concord B	Room 2, Concord C	Exhibition Room, Concord A	
			Poster	Exhibition
13:00	<b>Workshop 1</b>  <b>Pathophysiology of PE: I</b>  <i>Speakers</i> 1. Gregory E. Rice (Australia) Exosomal signalling in complications of pregnancy 2. Toshihiro Takizawa (Nippon Medical School) Involvement of microRNAs in pathophysiology of preeclampsia 3. Akiyoshi Fukamizu (University of Tsukuba) Biology and chemistry of a mouse model with pregnancy-associated hypertension 4. Keiichi Kumasawa (Osaka University) Exploration of preeclampsia model mice 5. Keizo Kanasaki (Kanazawa Medical University) Pathogenesis of preeclampsia: COMT deficiency and its relevance  <i>Chairpersons</i> Gregory E. Rice (Australia) Yoshiki Kudo (Hiroshima University)	<b>Workshop 2</b> (Sponsored by Eli Lilly Japan K.K.)  <b>GDM</b>  <i>Speakers</i> 1. Hema Divakar (India) Rising prevalence of GDM in India-challenges and opportunities 2. Lorella Battini (Italy) Screening and managing diabetes in pregnancy: the Italian model 3. Kei Miyakoshi (Keio University) Clinical features of gestational diabetes mellitus by the new consensus criteria: Three year experience in a single institution in Japan 4. Takashi Sugiyama (Tohoku University) Management for mild gestational diabetes in Japan: Messages from a retrospective multi-institutional study 5. Hisashi Masuyama (Okayama University) Adipocytokines in gestational diabetes mellitus and offspring's metabolic syndrome  <i>Chairpersons</i> J. N. Oats (Australia) Yuji Hiramatsu (Okayama University)	Poster Set Up	
14:40				
14:50	<b>Workshop 3</b>  <b>Pathophysiology of PE: II</b>  <i>Speakers</i> 1. Keiichi Matsubara (Ehime University) Endothelial dysfunction in the pathogenesis of preeclampsia 2. Takeshi Nagamatsu (the University of Tokyo) Lysophosphatidic acid signaling as a functional modulator of trophoblasts and its relevance to the pathology of preeclampsia 3. Katsuhiko Naruse (Nara Medical University) Adipocytokine and inflammation in preeclampsia 4. Kaori Koga (the University of Tokyo) Angiogenic factors in preeclampsia 5. Gus Dekker (Australia) Management preeclampsia  <i>Chairpersons</i> Gus Dekker (Australia) Tatsuo Yamamoto (Nihon University)	<b>Workshop 4</b> (Sponsored by Japan Blood Products Organization)  <b>Postpartum Hemorrhage</b>  <i>Speakers</i> 1. Sabaratnam Arulkumaran (UK) PPH – Lessons from confidential inquiries – thoughts for the future 2. Jin-chung Shih (Taiwan) Massive primary postpartum hemorrhage: embolization or hysterectomy? 3. Shintaro Makino (Juntendo University) Usefulness of balloon tamponade and compression suture for massive uterine bleeding 4. Eiji Kondoh (Kyoto University) Management of postpartum hemonhage 5. Atsuo Itakura (Juntendo University) Management of coagulopathy (Obstetrical DIC)  <i>Chairpersons</i> Sabaratnam Arulkumaran (UK) Koichiro Shimoya (Kawasaki Medical University)		
16:30			Poster Discussion	
18:30	Cocktail Service		Poster Removal ~20:00	
19:00	Banquet			
21:00				

# Friday, September 19

	Room 1, Concord B	Room 2, Concord C	Exhibition Room, Concord A		43F Starlight
			Poster	Exhibition	
8:00	<b>Morning Lecture 1</b>  <b>Peri-implantation origins of pregnancy complications</b>  <i>Speaker</i> Jan Brosens (UK) <i>Chairperson</i> Mayumi Sugiura (Nagoya City University)	<b>Morning Lecture 2</b> (Sponsored by TOKIBO Co., Ltd.)  <b>Uterine tamponade in management of PPH-Malaysian experience</b>  <i>Speaker</i> Carol KK Lim (Malaysia) <i>Chairperson</i> Takahiko Kubo (National Center for Child Health and Development)			7:30-9:00 JSSHP Permanent Board of Directors
8:50					
9:00	<b>Overseas Invited Lecture 3</b>  <b>Modeling the earliest events in preeclampsia using stem cells</b>  <i>Speaker</i> Danny J Schust (USA) <i>Chairperson</i> Tomoyuki Fujii (The University of Tokyo)	<b>Overseas Invited Lecture 5</b>  <b>What is new in placenta accreta in 2014: from diagnosis to management</b>  <i>Speaker</i> Jin-Chung Shih (Taiwan) <i>Chairperson</i> Hidetaka Katabuchi (Kumamoto University)			
9:30	<b>Overseas Invited Lecture 4</b>  <b>Recent advances in the pathogenesis and management of preeclampsia</b>  <i>Speaker</i> János Rigó (Hungary) <i>Chairperson</i> Shigeki Matsubara (Jichi Medical University)	<b>Overseas Invited Lecture 6</b>  <b>Issues of multi-fetal pregnancy reduction</b>  <i>Speaker</i> Aris Antsaklis (Greece) <i>Chairperson</i> Tomoko Adachi (Aiiiku Hospital)			
10:00	Coffee Break				
10:10	<b>Workshop 5</b>  <b>HELLP syndrome and eclampsia</b>  <i>Speakers</i> 1. Kazushi Watanabe (Aichi Medical University) Incidence of eclampsia in Japanese women 2. Yasumasa Ohno (Ono Ladies Clinic) Management of eclampsia and stroke during pregnancy 3. Hisanori Minakami (Hokkaido University) Determination of antithrombin activity (AT) enhances "Safety" of the management of pregnant women, especially in women with multifetal pregnancies, hypertension, proteinuria, or edema 4. Girija Wagh (India) Emergency Critical care in pregnant women in India 5. Osamu Nakamoto (Osaka City General Hospital) The effective and maintained antihypertensive management in eclampsia and HELLP syndrome by the stepwise protocol of nicardipine drip infusion with starting at low dose under referring to diastolic blood pressure 6. Bhumija Sharma (India) Correlation of thrombocytopenia and LDH levels in patients with pregnancy hypertension and its comparison with normotensive pregnant women <i>Chairpersons</i> Girija Wagh (India) Hisanori Minakami (Hokkaido University)	<b>Workshop 6</b> (Sponsored by KISSEI Pharmaceutical Co., Ltd.)  <b>Preterm labor</b>  <i>Speakers</i> 1. Yasushi Hirota (the University of Tokyo) Decidual cellular senescence contributes to preterm delivery 2. Jun Takeda (Juntendo University) Leukocyte activation before term and preterm labour 3. Katsufumi Otsuki (Showa University, Koto Toyosu Hospital) Trial for prevention of preterm birth in Japan 4. Satoshi Yoneda (University of Toyama) The effect of appropriate antibiotic therapy to preterm labor with intraamniotic infection 5. Alex C. Vidaeff (USA) Antenatal corticosteroids; anything new after Liggins? <i>Chairpersons</i> Alex C. Vidaeff (USA) Kenjiro Takagi (Jichi Medical University Saitama Medical Center)			
11:50					
12:00	<b>Educational Lecture 3</b> (Sponsored by Toitu)  <b>Standardization of fetal heart rate pattern management: is international consensus possible?</b>  <i>Speaker</i> Julian T. Parer (USA) <i>Chairperson</i> Tomoaki Ikeda (Mie University)	<b>Educational Lecture 4</b> (Sponsored by ASKA Pharmaceutical Co., Ltd.)  <b>Pathways to preterm birth</b>  <i>Speaker</i> David Olson (Canada) <i>Chairperson</i> Mamoru Tanaka (Keio University)			
12:50					

	Room 1, Concord B	Room 2, Concord C	Exhibition Room, Concord A	
			Poster	Exhibition
12:50	<b>Workshop 7</b> <b>Early prediction of PE</b> <i>Speakers</i> <ol style="list-style-type: none"> <li>1. Arihiro Shiozaki (University of Toyama) Epidiology of preeclampsia in Japan</li> <li>2. Mamoru Morikawa (Hokkaido University) Outcome of pregnancy with isolated proteinuria - gestational proteinuria can detect the onset of preeclampsia</li> <li>3. Akinori Miki (Saitama Medical University) Standard range of home blood pressure during pregnancy</li> <li>4. Hirohito Metoki (Tohoku Univerisity) Out-of-office blood pressure monitoring during pregnancy</li> <li>5. Akihide Ohkuchi (Jichi Medical University) Prediction of preeclampsia using angiogenesis-related factors or home blood pressure monitoring</li> </ol> <i>Chairpersons</i> <p>Mark Brown (Australia) Yutaka Imai (Tohoku University)</p>	<b>Workshop 8</b> (Sponsored by GE Healthcare Japan Corporarion) <b>Ultrasonography</b> <i>Speakers</i> <ol style="list-style-type: none"> <li>1. Tullio Ghi (Italy) The occiput spine angle: a new sonographic index of fetal head deflexion during the first stage of labor</li> <li>2. Alexander M. Papitashvili (Georgia) The effectiveness of ultrasound examination to detect the antenatal viral infection in normal and preeclampsia complicated pregnancy</li> <li>3. Alesandra Curti (Italy) Uterine artery doppler longitudinal changes and early-onset intrauterine growth restriction: a case-control study</li> <li>4. Michael Sindos (Greece) First trimester prediction of ischemic placental disease</li> </ol> <i>Chairpersons</i> <p>Aris Antsaklis (Greece) Kazunori Baba (Saitama Medical University)</p>	Poster Set Up	
14:30	<b>Workshop 9</b> <b>Treatment and management of PE</b> <i>Speakers</i> <ol style="list-style-type: none"> <li>1. Sanjay Gupte (India) Preeclampsia complicated by other medical disorders</li> <li>2. Taichi Akahori (Saitama Medical University) Management of preeclampsia (PE) in Japan</li> <li>3. Yoshikatsu Suzuki (Nagoya City West Medical Center) Antihypertensive drugs for pregnancy induced hypertension</li> <li>4. Nobuyuki Takahashi (Tohoku Univevrsity) A novel pharmacotherapy of preeclampsia</li> <li>5. Attila Molvarec (Hungary) Increased placental expression of cannabinoid receptor 1 in preeclampsia</li> <li>6. Yuditiya Purwosunu (Indonesia) Recent pathophysiology of cell-free nucleic acid in pregnancy</li> </ol> <i>Chairpersons</i> <p>Sanjay Gupte (India) Akihiko Sekizawa (Showa University)</p>	<b>Workshop 10</b> <b>CP</b> <i>Speakers</i> <ol style="list-style-type: none"> <li>1. Hideki Hida (Nagoya City University) Arrested lineage progression of oligodendrocytes with minor damage in the corticospinal tracts in developmental white matter injury model rat</li> <li>2. Masahiro Hayakawa (Nagoya University) Current perspectives in hypoxic-ischemic encephalopathy in Japan</li> <li>3. Hiroshi Sameshima (Miyazaki University) Trends in perinatal brain damage in our population-based study</li> <li>4. Takashi Okai (Aiiiku Hospital) The Japan obstetric compensation system for cerebral palsy</li> <li>5. Keiya Fujimori (Fukushima Medical University) Analyses of 39 cases of cerebral palsy caused by placental abruption on the Japan obstetric compensation system for cerebral palsy</li> </ol> <i>Chairpersons</i> <p>H. Hagberg (UK) Tsuyomu Ikenoue (Miyazaki University)</p>		
16:10			Poster Discussion	
18:00			Poster Removal	
18:30 20:00			Get Together	

# Saturday, September 20

	Room 1, Concord B	Room 2, Concord C	Exhibition Room, Concord A	
			Poster	Exhibition
8:00 8:45		7:30-8:15 JSSHP Board of Directors 8:15-9:00 JSSHP Board of Councilors & General Meeting		
8:30	<b>Morning Lecture 3</b> (Sponsored by Smiths Medical Japan Ltd.)  <b>Should we promote labor analgesic for Japanese parturients?</b>  <i>Speaker</i> Hiroyuki Sumikura (Juntendo University) <i>Chairperson</i> Toshiyuki Takeshita (Nippon Medical School)			
9:00	<b>Morning Lecture 4</b>  病態から考える妊娠高血圧症候群（PIH）の抗凝固療法—世界のVTE予防ガイドラインを病態生理の観点から考える—  <i>Speaker</i> Motoi Sugiura (Hamamatsu Medical University) <i>Chairperson</i> Takao Kobayashi (Hamamatsu Medical Center)			
9:30	<b>Research Report (Fiscal year 2012)</b>  分娩時高血圧の臨床的意義の検討  <i>Speaker</i> Yasumasa Ohno (Ono Ladies Clinic) <i>Chairperson</i> Hiroyuki Seki (Saitama Medical University)	<b>Workshop 11</b>  <b>Screening of fetal abnormality</b>  <i>Speakers</i> 1. Ryu Matsuoka (Showa University) What is the problem with echo screening for congenital heart disease? 2. Yuka Yamamoto (Juntendo University) Fetal echocardiography: cardiac function 3. Junichi Hasegawa (Showa University) Ultrasound screening of umbilical cord and perinatal outcomes 4. Seiji Tsutsumi (Yamagata University) Fetal bone dysplasia and analysis of pathophysiological mechanisms <i>Chairpersons</i> Alexander Papitashvili (Georgia) Koyo Yoshida (Juntendo University Urayasu Hospital) (11:10終了)	Poster Set up	
10:00	<b>Young Researchers' Award (Fiscal year 2013)</b> 1. Kaoru Kawasaki (Kyoto University) 複数の遺伝子発現データを用いた統合的解析による妊娠高血圧腎症に特異的な遺伝子群（pathway）の同定			
10:25	2. Keiko Koide (Showa University) 絨毛における生理的DNAメチル化変化の異常と妊娠高血圧腎症			
10:50	3. Noriko Yoneda (University of Toyama) 妊娠20週以前に重症妊娠高血圧腎症様症状を呈した部分胎状奇胎合併妊娠2症例と腎不全を呈した間葉性嚢形成胎盤症例			
11:15	<b>Young Researchers' Award (Fiscal year 2012)</b> 1. Kaori Ino (Hiroaki University) 妊娠前の血圧値と将来のcardiovascular disease risk factorとの関連性について  <i>Chairpersons</i> Motoi Sugimura (Hamamatsu Medical University) Keiichi Matsubara (Ehime University)			
11:40	Commendation Ceremony Hiroyuki Seki (Saitama Medical University)			
11:45			Poster Discussion	
12:00	<b>Educational Lecture 5</b> (Sponsored by Toa Pharmaceutical Co., Ltd.)  <b>硫酸マグネシウムと周産期医療</b>  <i>Speaker</i> Tomoaki Ikeda (Mie University) <i>Chairperson</i> Haruhiko Sago (National Center for Child Health and Development)	<b>Educational Lecture 6</b>  <b>Preeclampsiaの病態論と病態論から見た管理・治療</b>  <i>Speaker</i> Hiroyuki Seki (Saitama Medical University) <i>Chairperson</i> Ken-ichi Furuya (National Defence Medical College)		
12:50				
13:00	<b>Research Society of Management of Labor and Delivery</b> 1. Hiroyuki Sumikura (Juntendo University) 超緊急帝王切開の麻酔 2. Yoshimasa Kamei (Saitama Medical University) 鉗子分娩術を安全に行うための工夫 3. Shintaro Makino (Juntendo University) 帝王切開時の止血方法 4. Reiko Woodhams (Kitazato University) 産科出血に対するIVR（仮題）  <i>Chairpersons</i> Kei Miyakoshi (Keio University) Eiji Kondo (Kyoto University)			
15:00				
15:00	Closing Ceremony		15:15-16:00 Poster Removal	

# Scientific Program

---

## Opening Remarks

Room 1, Concord B 9:00–9:30, Sept. 18 (Thu.)

### **Pre-eclampsia in the third world**

Sanjay Gupte

Gupte Hospital & Centre for Research in Reproduction, Pune, India

---

## Opening Lecture

Room 1, Concord B 9:30–10:00, Sept. 18 (Thu.)

### **Preeclampsia and eclampsia the evolution and current status**

Sir Sabaratnam Arulkumaran

Professor Emeritus of Obstetrics & Gynaecology, St. George's University of London, UK  
President, International Federation of Gynecology and Obstetrics (FIGO)

---

## Overseas Invited Lecture

Room 1, Concord B 10:00–10:30, Sept. 18 (Thu.)

### **1. ISSHP 2014 Classification and Diagnosis of Hypertensive Pregnancies: proteinuria in perspective.**

Mark A Brown

Dept. Renal Medicine. St George Hospital & University of NSW. Sydney. Australia  
President, International Society for the Study of Hypertension in Pregnancy (ISSHP)

Room 1, Concord B 10:30–11:00, Sept. 18 (Thu.)

### **2. Preeclampsia - a Disease of An Individual Couple**

Gus Dekker

Obstetrics & Gynaecology Adelaide University, Australia

Room 1, Concord B 9:00–9:30, Sept. 19 (Fri.)

### **3. Modeling the Earliest Events in Preeclampsia using Stem Cells**

Danny J. Schust

University of Missouri, Columbia. Missouri, USA

Room 1, Concord B 9:30–10:00, Sept. 19 (Fri.)

### **4. Recent advances in the pathogenesis and management of preeclampsia**

János Rigó Jr.

First Department of Obstetrics and Gynecology, Semmelweis University, Budapest, Hungary

Room 2, Concord C 9:00–9:30, Sept. 19 (Fri.)

### **5. What is New in Placenta Accreta in 2014: from Diagnosis to Management**

Jin-Chung Shih

Department of Obstetrics and Gynecology, National Taiwan University Hospital, Taipei, Taiwan

Room 2, Concord C 9:30–10:00, Sept. 19 (Fri.)

### **6. Issues of Multi-Fetal Pregnancy Reduction**

ARIS J. ANTSAKLIS

1st Department of Obstetrics and Gynecology, University of Athens, Greece

---

## Educational Lecture

---

Room 1, Concord B 12:00–12:50, Sept. 18 (Thu.)

### **1. Second generation, SNP based non-invasive prenatal testing**

Zachary P. Demko

Natera, San Carlos, CA. Senior Director of R&D; Senior Director of IP, USA

Sponsored by Natera, Inc./ Fetal Life Science Center

Room 2, Concord C 12:00–12:50, Sept. 18 (Thu.)

### **2. Cervical maturation and labor induction**

Bruno Carbonne

Department of Obstetrics, Hopital Trousseau Maternity, Paris, France

Sponsored by Ferring Pharmaceuticals Co., Ltd.

Room 1, Concord B 12:00–12:50, Sept. 19 (Fri.)

### **3. Standardization of FHR pattern management: Is international consensus possible?**

Julian T. Parer

University of California, San Francisco, USA

Sponsored by Toitu

Room 2, Concord C 12:00–12:50, Sept. 19 (Fri.)

### **4. Pathways to preterm birth**

David M. Olson

Professor, University of Alberta, Canada

Sponsored by ASKA Pharmaceutical Co., Ltd.

---

## Sponsored Lecture

---

Room 1, Concord B 11:15–11:50, Sept. 18 (Thu.)

### **1. Mechanism of perinatal brain injury**

Henrik Hagberg

Perinatal Center, Sahlgrenska Academy, Gothenburg, Sweden  
Centre for the Developing Brain, King's College London, UK

Sponsored by Japan Vaccine Co., Ltd.

Room 2, Concord C 11:15–11:50, Sept. 18 (Thu.)

### **2. The challenges to introducing internationally acceptable criteria for GDM**

Jeremy J N Oats

Melbourne School of Population and Global Health, University of Melbourne, Victoria, Australia

Sponsored by Asahi Kasei Pharma Corporation

---

## Morning Lecture 1

---

Room 1, Concord B 8:00–8:50, Sept. 19 (Fri.)

### **Peri-implantation origins of pregnancy complications**

Jan J Brosens

Division of Reproductive Health, Warwick Medical School, University of Warwick, UK



---

## Morning Lecture 2

Room 2, Concord C 8:00–8:50, Sept. 19 (Fri.)

### Uterine Tamponade in Management of PPH – Malaysian Experience

Carol KK Lim

Temerloh Hospital, Malaysia

Sponsored by TOKIBO Co., Ltd.

---

## Workshop 1 Pathophysiology of PE: I

Room 1, Concord B 13:00–14:40, Sept. 18 (Thu.)

### 1. Exosomal signalling in complications of pregnancy

Salomon C, Illanes, SE, Mitchell MD, Rice GE

University of Queensland Centre for Clinical Research, Australia

### 2. Involvement of microRNAs in pathophysiology of preeclampsia

Toshihiro Takizawa<sup>1</sup>, Akihide Ohkuchi<sup>2</sup>, Shigeru Saito<sup>3</sup>, Toshiyuki Takeshita<sup>4</sup>

<sup>1</sup>Department of Molecular Medicine and Anatomy, and <sup>4</sup>Department of Reproductive Medicine, Perinatology and Gynecologic Oncology, Nippon Medical School, Tokyo, Japan

<sup>2</sup>Department of Obstetrics and Gynecology, Jichi Medical University, Tochigi, Japan

<sup>3</sup>Department of Obstetrics and Gynecology, University of Toyama, Toyama, Japan

### 3. Biology and chemistry of a mouse model with pregnancy-associated hypertension

Akiyoshi Fukamizu

Life Science Center, Tsukuba Advanced Research Alliance, University of Tsukuba, Japan

### 4. Exploration of preeclampsia model mice

Keiichi Kumasawa

Department of Obstetrics and Gynecology, Osaka University, Japan

### 5. Pathogenesis of preeclampsia: COMT deficiency and its relevance.

Keizo Kanasaki

Department of Diabetology and Endocrinology, Kanazawa Medical University, Japan

---

## Workshop 2 GDM

Room 2, Concord C 13:00–14:40, Sept. 18 (Thu.)

### 1. Rising prevalence of GDM in India – Challenges and opportunities

Hema Divakar

Immediate past President FOGSI - India

### 2. Screening and managing diabetes in pregnancy : “The Italian Model”

Battini Lorella<sup>1</sup>, Lacaria Emilia<sup>2</sup>, Trojano Giuseppe<sup>1</sup>, Bottone Pietro<sup>1</sup>,

Fulceri Marco Anselmo, Carmignani Arianna<sup>1</sup>, Cattani Raffaella<sup>1</sup>,

Salerno Maria Giovanna<sup>1</sup>, Del Prato Stefano<sup>2</sup>, Di Cianni Graziano<sup>3</sup>,

Bertolotto Alessandra<sup>2</sup>

<sup>1</sup>Dept. Obstetrics-Gynaecology 2nd Unit, University-HealthCare System, Pisa, Italy

<sup>2</sup>Dept. Endocrinology and Metabolism, University of Pisa, Italy

<sup>3</sup>C.O.U. Diabetology and Metabolism Diseases, Sanitary Local Unit, Livorno, Italy

### 3. Clinical features of gestational diabetes mellitus by the new consensus criteria: Three year experience in a single institution in Japan.

Kei Miyakoshi

Department of Obstetrics and Gynecology, School of Medicine, Keio University, Japan

**4. Management for mild gestational diabetes in Japan:  
messages from a retrospective multi-institutional study**

Takashi Sugiyama

Department of Obstetrics and Gynecology, Tohoku University Graduate School of Medicine, Japan

**5. Adipocytokines in gestational diabetes mellitus and offspring's metabolic syndrome**

Hisashi Masuyama, Yuji Hiramatsu

Department of Obstetrics and Gynecology, Okayama University Graduate School of Medicine,  
Dentistry and Pharmaceutical Sciences, Japan

Sponsored by Eli Lilly Japan K.K.

---

**Workshop 3** Pathophysiology of PE: II

Room 1, Concord B 14:50–16:30, Sept. 18 (Thu.)

**1. Endothelial dysfunction in the pathogenesis of preeclampsia**

Keiichi Matsubara

Department of Obstetrics and Gynecology, Ehime University School of Medicine, Japan

**2. Lysophosphatidic acid signaling as a functional modulator of trophoblasts and its relevance to the pathology of preeclampsia**

Takeshi Nagamatsu, Mayuko Ichikawa, Yuki Kawai-Iwasawa, Tatsuya Fujii,  
Kei Kawana, Takahiro Yamashita, Tomoyuki Fujii

Department of Obstetrics and Gynecology, The University of Tokyo, Japan

**3. Adipocytokine and inflammation in preeclampsia**

Katsuhiko Naruse

Obstetrics & Gynecology, Nara Medical University, Nara, Japan

**4. Angiogenic factors in preeclampsia**

Kaori Koga

Obstetrics and Gynecology, the University of Tokyo, Japan

**5. Management preeclampsia**

Gus Dekker

University of Adelaide, Australia

---

**Workshop 4** Postpartum Hemorrhage

Room 2, Concord C 14:50–16:30, Sept. 18 (Thu.)

**1. PPH – Lessons from confidential inquiries – thoughts for the future**

S. Arulkumaran

Professor Emeritus, St George's University of London, UK

**2. Massive primary postpartum hemorrhage: embolization or hysterectomy?**

Jin-Chung Shih

Department of Obstetrics and Gynecology, National Taiwan University Hospital, Taipei, Taiwan

**3. Usefulness of balloon tamponade and compression suture for massive uterine bleeding**

Shintaro Makino

Juntendo University, Japan

## 4. Management of postpartum hemorrhage

Eiji Kondoh

Associate Professor, Department of Gynecology and Obstetrics, Kyoto University,  
Graduate School of Medicine, Kyoto, Japan

## 5. Management of Coagulopathy (Obstetrical DIC)

Atsuo Itakura

Department of Obstetrics and Gynecology, Juntendo University, Japan

Sponsored by Japan Blood Products Organization

### Workshop 5      HELLP syndrome and eclampsia

Room 1, Concord B    10:10–11:50, Sept. 19 (Fri.)

#### 1. Incidence of eclampsia in Japanese women

Kazushi Watanabe<sup>1</sup>, Yoshikatsu Suzuki<sup>2</sup>, Tamao Yamamoto<sup>3</sup>

<sup>1</sup>Department of Obstetrics and Gynecology, Aichi Medical University School of Medicine, Aichi, Japan

<sup>2</sup>Department of Obstetrics and Gynecology, Nagoya City West Medical Center, Aichi, Japan

<sup>3</sup>Department of Obstetrics and Gynecology, Nagoya City University, Aichi, Japan

#### 2. Management of eclampsia and stroke during pregnancy

Yasumasa Ohno

Ohno Ladies Clinic, Japan

#### 3. Determination of antithrombin activity (AT) enhances “Safety” of the management of pregnant women, especially in women with multifetal pregnancies, hypertension, proteinuria, or edema

Hisanori Minakami, Mamoru Morikawa, Takahiro Yamada, Rina Akaishi

Department of Obstetrics, Hokkaido University Graduate School of Medicine, Sapporo, Japan

#### 4. Emergency Critical care in pregnant women in India

Girija Wagh

Obstetrics and Gynecology at the Bharati Vidyapeeth University Medical College at Pune, India

#### 5. The effective and maintained antihypertensive management in eclampsia and HELLP syndrome by the stepwise protocol of nicardipine drip infusion with starting at low dose under referring to diastolic blood pressure.

Osamu Nakamoto<sup>1</sup>, Ikuko Mita, Sachiyo Nishimoto<sup>1</sup>, Kohji Kajitani<sup>1</sup>,

Kazuharu Tanaka<sup>1</sup>, Hiroaki Nakamura<sup>1</sup>, Chika Mosohisa<sup>2</sup>

<sup>1</sup>Department of Obstetrics, Osaka City General Hospital, Japan

<sup>2</sup>Department of Obstetrics and Gynecology, Osaka City Juso Hospital, Japan

#### 6. Correlation of Thrombocytopenia and LDH levels in patients with pregnancy hypertension and its comparison with normotensive pregnant women

Bhumija Sharma

OBGY, Bharati Vidyapeeth Hospital and Medical College, Pune, India

### Workshop 6      Preterm labor

Room 2, Concord C    10:10–11:50, Sept. 19 (Fri.)

#### 1. Decidual cellular senescence contributes to preterm delivery.

Yasushi Hirota

Department of Obstetrics and Gynecology, Graduate School of Medicine, The University of Tokyo, Japan

## **2. Leukocyte activation before term and preterm labour**

J Takeda<sup>1,2</sup>, B Hanson<sup>1</sup>, X Fang<sup>1</sup>, DM Olson<sup>1</sup>

<sup>1</sup>Dept Ob/Gyn & Physiology, U of Alberta, Canada

<sup>2</sup>Dept Ob/Gyn, Juntendo U, Japan

## **3. Trial for prevention of preterm birth in Japan**

Katsufumi Otsuki

Chief and Associate Professor, Department of Obstetrics and Gynecology, Showa University Koto Toyosu Hospital, Japan

## **4. The effect of appropriate antibiotic therapy to preterm labor with intraamniotic infection**

Satoshi Yoneda, Noriko Yoneda, Mika Ito, Arihiro Shiozaki, Shigeru Saito

Department of Obstetrics & Gynecology, University of Toyama, Toyama, Japan

## **5. Antenatal corticosteroids; Anything new after Liggins?**

Alex C. Vidaeff

Baylor College of Medicine, Houston, USA

Sponsored by KISSEI Pharmaceutical Co., Ltd.

### Workshop 7      Early prediction of PE

Room 1, Concord B    12:50 – 14:30, Sept. 19 (Fri.)

#### **1. Epidemiology of preeclampsia in Japan**

Arihiro Shiozaki<sup>1</sup>, Yoshio Matsuda<sup>2</sup>, Shoji Satoh<sup>3</sup>, Shigeru Saito<sup>1</sup>

<sup>1</sup>Department of Obstetrics and Gynecology, University of Toyama, Toyama, Japan

<sup>2</sup>Department of Obstetrics and Gynecology, International University of Health and Welfare, Tochigi, Japan

<sup>3</sup>Maternal and Perinatal Care Center, Oita Prefectural Hospital, Oita, Japan

#### **2. Outcome of pregnancy with isolated proteinuria**

**- gestational proteinuria can detect the onset of preeclampsia**

Mamoru Morikawa

Department of Obstetrics, Hokkaido University Graduate School of Medicine, Japan

#### **3. Standard range of home blood pressure during pregnancy**

Akinori Miki<sup>1</sup>, Kazuko Sato<sup>1</sup>, Atsuo Itakura<sup>2</sup>, Yoshimasa Kamei<sup>1</sup>, Osamu Ishihara<sup>1</sup>

<sup>1</sup>Department of Obstetrics and Gynecology, Saitama Medical University, Japan

<sup>2</sup>Department of Obstetrics and Gynecology, Juntendo University, Japan

#### **4. Out-of-office blood pressure monitoring during pregnancy**

Hirohito Metoki<sup>1,2</sup>, Takayoshi Ohkubo<sup>3</sup>, Noriyuki Iwama<sup>2</sup>, Mami Ishikuro<sup>1,2</sup>,

Taku Obara<sup>1,2</sup>, Hidekazu Nishigori<sup>2</sup>, Takashi Sugiyama<sup>2</sup>, Junichi Sugawara<sup>1,2</sup>,

Shinichi Kuriyama<sup>1,2</sup>, Kazuhiko Hoshi<sup>4</sup>, Masakuni Suzuki<sup>4</sup>,

Nobuo Yaegashi<sup>1,2</sup>, Yutaka Imai<sup>2</sup>

<sup>1</sup>Tohoku Medical Megabank Organization, Tohoku University, Japan

<sup>2</sup>Tohoku University Graduate School of Medicine and Pharmaceutical Sciences, Japan

<sup>3</sup>Teikyo University School of Medicine, Japan

<sup>4</sup>Suzuki Memorial Hospital, Japan

#### **5. Prediction of preeclampsia using angiogenesis-related factors or home blood pressure monitoring**

Akihide Ohkuchi<sup>1</sup>, Chikako Hirashima<sup>1</sup>, Miyuki Saruyama<sup>1</sup>, Kayo Takahashi<sup>1</sup>,

Takako Ohmaru<sup>2</sup>, Hirotada Suzuki<sup>1</sup>, Shigeki Matsubara<sup>1</sup>, Mitsuaki Suzuki<sup>1</sup>

<sup>1</sup>Obstetrics and Gynecology, Jichi Medical University School of Medicine, Japan

<sup>2</sup>Obstetrics and Gynecology, Kyushu University, Japan

---

## Workshop 8      Ultrasonography

Room 2, Concord C    12:50–14:30, Sept. 19 (Fri.)

### **1. The occiput spine angle: a new sonographic index of fetal head deflexion during the first stage of labor**

Tullio Ghi

Obstetrics and Gynaecology, S. Orsola Malpighi Hospital, Bologna, Italy

### **2. The effectiveness of ultrasound examination to detect the antenatal viral infection in normal and preeclampsia complicated pregnancy**

Alexander Papitashvili

Professor of Tbilisi Medical College VITA,  
Senior Specialist on Medical Ultrasound of Tbilisi Medical Center, Georgia, USA

### **3. Uterine artery Doppler longitudinal changes and early-onset intrauterine growth restriction: a case-control study**

Alessandra Curti

Department of Medicine and Surgery DIMEC—Division of Prenatal Medicine,  
St. Orsola Malpighi Hospital, University of Bologna, Bologna, Italy

### **4. First trimester prediction of ischemic placental disease**

Michael Sindos

Consultant Obstetrician-Gynaecologist  
Fetal maternal medicine unit and High risk pregnancy ward, 1st Department of Obstetrics and Gynaecology,  
Alexandra Maternity Hospital, University of Athens, Greece

Sponsored by GE Healthcare Japan Corporation

---

## Workshop 9      Treatment and management of PE

Room 1, Concord B    14:30–16:10, Sept. 19 (Fri.)

### **1. Preeclampsia complicated by other medical disorders**

Sanjay Gupte

Gupte Hospital & Centre for Research in Reproduction, Pune, India

### **2. Management of preeclampsia (PE) in Japan.**

Taichi Akahori

Department of Obstetrics and Gynecology, Saitama Medical Center/ Saitama Medical University, Japan

### **3. Antihypertensive drugs for pregnancy induced hypertension**

Yoshikatsu Suzuki<sup>1</sup>, Ayano Matsuura<sup>1</sup>, Tomoe Arakawa<sup>1</sup>, Tamao Yamamoto<sup>2</sup>

<sup>1</sup>Nagoya City West Medical Center, Japan

<sup>2</sup>Mammy Rose Clinic, Japan

### **4. A novel pharmacotherapy of preeclampsia**

Nobuyuki Takahashi

Tohoku University Graduate School of Pharmaceutical Sciences, Sendai, Japan

### **5. Increased placental expression of cannabinoid receptor 1 in preeclampsia**

Attila Molvarec

First Department of Obstetrics and Gynecology, Semmelweis University, Budapest, Hungary

### **6. Recent pathophysiology of cell-free nucleic acid in pregnancy**

Yuditiya Purwosunu

Dept of Obstetric Gynecology, University of Indonesia, Indonesia

---

## Workshop 10 CP

Room 2, Concord C 14:30–16:10, Sept. 19 (Fri.)

**1. Arrested lineage progression of oligodendrocytes with minor damage  
in the corticospinal tracts in developmental white matter injury model rat**

Hideki Hida

Dept. Neurophysiol. & Brain Sci., Nagoya City Univ Grad Sch Med Sci, Nagoya, Japan

**2. Current perspectives in hypoxic-ischemic encephalopathy in Japan**

Masahiro Hayakawa

Center for Maternal-Neonatal Care, Nagoya University Hospital, Japan

**3. Trends in perinatal brain damage in our population-based study**

Hiroshi Sameshima

Professor and Chairman, Department of Obstetrics and Gynecology, University of Miyazaki, Japan

**4. The Japan obstetric compensation system for cerebral palsy**

Takashi Okai

Director, Imperial Gift Foundation, Maternal and Child Health Center Aiiiku Hospital, Japan

**5. Analyses of 39 cases of cerebral palsy caused by placental abruption  
on the Japan obstetric compensation system for cerebral palsy**

Keiya Fujimori

Department of Obstetrics and Gynecology, School of Medicine, Fukushima Medical University, Japan

---

## Workshop 11 Screening of fetal abnormality

Room 2, Concord C 9:30–11:10, Sept. 20 (Sat.)

**1. What is the problem with echo screening for congenital heart disease?**

Ryu Matsuoka

Dept. of Obstetrics and Gynecology, Showa University School of Medicine, Japan

**2. Fetal echocardiography: cardiac function**

Yuka Yamamoto

Department of Obstetrics and Gynecology, Juntendo University Faculty of Medicine, Japan

**3. Ultrasound screening of umbilical cord and perinatal outcomes**

Junichi Hasegawa

Department of Obstetrics and Gynecology, Showa University School of Medicine, Tokyo, Japan

**4. Fetal bone dysplasia and analysis of pathophysiological mechanisms**

Seiji Tsutsumi

Department of Obstetrics and Gynecology, Yamagata University, Faculty of Medicine, Japan